

**PROSPECTUS
2024-2025**



Seeking Within

**FIRST HOMEGROWN
PRIVATE MEDICAL COLLEGE
IN NORTH EAST INDIA**

SAHS

Shija Academy of Health Sciences

SHIJA ACADEMY OF HEALTH SCIENCES



Message from the Desk of Chairman & Managing Director

After due inspection and screening, Shija Hospitals and Research Institute Pvt. Ltd. is now permitted by the National Medical Commission to start a new private medical college with 150 students intake capacity per year at the HealthVillage, Langol, Imphal West, Manipur under the name and style of Shija Academy of Health Sciences (SAHS) from the year 2021.

SAHS is the first homegrown private medical college in the NE India and born in Manipur as a product of synchronicity of various blessings like manpower, infrastructure, various supports, timing, preparedness etc.

The college is having a fully functional 350 bedded First NABH accredited medical college hospital which has the saga of achievements in medical revolution in the state for the last 38 years.

The main purpose of establishing the new medical college is to produce strong, empathetic, compassionate, socially and environmentally responsible research oriented medical graduates and post graduates and affordable quality healthcare and medical value tourism to help save state's exchequer and inclusive growth of the region.

Education and healthcare are the major economic drainages of the state. Out of over 4000 medical aspirants in Manipur, only about 150 students are selected as government nominees and over 400 Manipuri students are going outside the state and country for private medical studies per year. It is estimated that about 700 Manipuri medical students are studying in China only at present.

And about 50,000 patients are estimated to be going outside the state for health reasons per year including 2-3 attendants per patient who are educated or employed leading to huge man hour loss apart from the inconveniences due to language, culture and alien environment and prohibitive cost.

The hostel is already constructed for 150 students annual intake in which we have developed offices, library and laboratories of three pre clinical departments - Anatomy, Physiology and Biochemistry. We have the faculty members required. The proposed private medical college will have an academic block and a separate 700 bedded teaching hospital which will be constructed within two to three years.

Shija Academy of Health Sciences(SAHS), Imphal -the first homegrown private medical college in NE India will help, to some extent save the state's exchequer and the economic growth of the state through capacity building, employment generation and foreign exchanges.

I wish the faculty members, the students and the management all the best in creating SAHS as one of the best teaching institutes globally in the environment of ever changing healthcare technologies.

'Future belongs to those who believe in the beauties of their dreams'. Thank you.




Dr. Palin Khundongbam, CMD
Shija Academy of Health Sciences

CONTENTS

Page 1-4	Message from Board of Directors
Page 5-6	Message from the Director and Medical Superintendent
Page 7-8	Shija Academy of Health Sciences at a Glance
Page 9	Motto, Mission, Vision, Core Values
Page 10	Basic of Admission Admission to MBBS Course
Page 11-12	Course, Hostel, Mess and Utility Fees
Page 13-14	Description of the MBBS Course Eligibility of Admission
Page 15-16	Discipline Anti Ragging Possession of Illicit Drugs, Alcohol, Tobacco & Cigarettes Involvement in Strikes & Criminal Acts Wi-fi
Page 17	Departments Anatomy Physiology Biochemistry Pharmacology Microbiology Pathology Forensic Medicine Community Medicine
Page 21	Infrastructure Lecture Hall Teaching Room Library Residential
Page 24	Sports and Recreation Indoor & Outdoor Games Mess/ Canteen
Page 27	Overview of Shija Hospitals
Page 30	Vision Mission & Core Value
Page 31	Scope of Services Clinical Services Laboratory Services Transfusion Services Health Check Diagnostic Services Support & Other Services Services not Available
Page 33	Our Medical Feats

Page 36

Departments of Shija Hospitals

Anesthesiology & Critical Care
Shija Heart Beat
Clinical Laboratory
Shija Molecular Lab
Emergency & Trauma Unit
Audiology & Speech Language Pathology
Shija Blood Bank & Transfusion Unit
Psychiatry
Pharmacology (medication)
Physiotherapy and Rehabilitation Wing
Surgical Oncology
Radiology and Imaging Science
Interventional Radiology
Plastic Surgery
Shija Dental White
General & Minimal Access Surgery
General Medicine
Medical Gastroenterology
Shija Kidney Centre
Kidney Transplant
Neurosurgery
Obstetrics & Gynaecology
Ophthalmology (Eye)
Dermatology
Respiratory Medicine
Orthopaedics
Dietitics & Nutrition
Otorhinolaryngology (ENT)
Paediatrics & Neonatology
Urology

Page 59

Smile Train Shija Cleft Project

Page 60

Mission Myanmar

Page 61

Know Your Faculty

Shija Group of Organisations

BOARD OF DIRECTORS



Dr. Palin Khundongbam

Dr. Palin, a Cosmetic & Plastic surgeon by a profession is the Chairperson and Managing Director of Shija Hospitals & Research Institute (SHRI). A passionate entrepreneur, Dr. Palin constantly keeps himself abreast with the latest discoveries and innovations. His perseverance and hard work is what is behind the growth of SHRI as a hospital par excellence. He is constantly upgrading the hospital with the latest equipment and technology thus making medical facilities easily accessible to the common man. Dr. Palin is also a member of various organizations like the Indian Medical Association, Association of Surgeons of India, and the Association of Plastic Surgeons of India. He has won many accolades in his long stint in the medical profession and has in his capacity as a doctor reached out to the masses through free surgeries and other medical facilities for the poor.

He is the moving spirit behind Shija and path finder who conceived the idea of Shija. From a mono-practice clinic in 1985 at Paona Bazar, Imphal to the first ever ISO certified and the first NABH (pre entry level) certified 350 bedded hospital in Manipur. with 28 specialties including super-specialty.

He has envisioned his organisation to be a premium & leading brand in healthcare services in the South East Asia, recognised by the customers for holistic approach, personal touch and technological advancement by 2025.



Dr. Bonney Khundongbam

Dr. Bonney Khundongbam is responsible for financial affairs of the organisation. Credit goes to her for streamlining and cost reduction activities taken up in the organization in the last couple of years. She is a sonologist by Profession and associated with various institutes such as IMA, Federation of Ultrasound in Medicine and Biology, Shija Foundation etc. She has played a vital role in bringing out good internal controls in the day to day functioning of the hospital.

Being a founder member of SHRI, her contribution has been remarkable throughout the journey. Her key activities also include planning, designing and execution of new projects.

Dr. Kh. Bonney is currently holding the position of Chief Executive Officer (CEO). She is entrusted with the task of taking care of financial affairs and material management of the hospital. She is also project director of the Smile train project initiated by SHRI.

BOARD OF DIRECTORS



Dr. Jugindra S.

Dr. Jugindra Sorokhaibam is a founding member of the Board of Directors. He is a General Surgeon by profession with an appreciable practice as a minimal access surgeon.

Besides being instrumental in setting up one of the most advanced and sophisticated laparoscopic surgeries, endo-urology and endoscopic facilities for the first time in Manipur and the North East region, he is credited with performing some of the most advanced and sophisticated laparoscopic surgeries for the first time in the state and the region. Recognizing his expertise in the field, his guidance in providing various trainings are being sought by various healthcare units and associations. He is a member and also a trainer of Association of Minimal Access Surgeons of India (AMASI). He is also the President of AMASI.

He was invited as one of the International Taskforce Panel Members at the international conference on Humanitarian Medical Missions held at Singapore General Hospital for his contribution as a relief volunteer in the Gujarat Earthquake, 2001.

He is the member of Association of Surgeons of India (ASI), Endoscopic and Laparoscopic Surgeons of Asia (ELSA), President Indian Medical Association (IMA-MSB), Vice President of Palliative Care Society Imphal. He also oversees the functioning of the Medical Consultants team, Nursing department, Medical Records and the Pharmacy of the SHRI. He has played a crucial role as part of the management team in building SHRI as a leading hospital in the region along with Dr. Palin.



Mrs. Gayatri Maibam

Mrs. Gayatri Maibam is currently holding the position Director - Human Resources and she is instrumental in development of the Human resource in the organization. She also plays a key role in upgrading the level of nursing care and allied services in the organization. She holds the stern to guide the staff to move towards the object of the organization. It is her initiative to plan and implement trainings for the various levels of staff.

Her key activities also include recruitment, organizing training programmes and restructuring the hierarchy of administration for the smooth functioning of the hospital. In her capacity as one of the Directors of SHRI, she has brought in a sea change in the administrative processes of the hospital. She has been a backbone of the Management team with a strong aim to reach the vision of Shija.

She is a Master in Sociology and associated herself in many social activities such as providing HIV and AIDS awareness to the masses. She is instrumental in implementing various social impact services in the organization such as immunization, community services, MDOT, etc.

Message from the Director



With great pleasure and enthusiasm, I welcome you all to the Medical profession and to the Shija Academy of Health Sciences (SAHS), Manipur, India. Manipur is well known for its natural beauty, flora and fauna since long. The state is truly known as the "Switzerland of India". It is popular and famous for its rich cultural heritage.

Manipur is also known as Powerhouse of Sports in India. Our medical institute, Shija Academy of Health Sciences is located at a pollution free picturesque area near a small hillock, little away from the densely populated city of Imphal, the capital of Manipur. The Academy is blessed with highly experienced faculty members with hi tech laboratory and hospital equipments. For teaching of medical students, the lecture theatres and other assigned areas of teaching including practical rooms are equipped with state of the art teaching aids and other allied facilities.

In my mind our academy has fulfilled all the amenities for producing the best medical graduates who are prepared to render service to humanity with empathy, professionalism and social responsibility. The unique geographical situation of this Academy permits the people of the region and neighbouring states and countries to get medical attention in its attached hospital, Shija Hospitals and Research Institute (SHRI). This is a testimony to the care rendered by faculties and staff.

Myself as the director of the academy will try to show the right way and to facilitate each and everyone, the students, faculty members and staffs to attain their maximum potential. Further, I wish to initiate staff and student wellness initiatives and strengthen the environment cleanliness measures. With the ring of support around me by the management team of SAHS. I look forward to accomplish the duties and responsibilities which I have been privileged to perform.

Best Wishes to all !

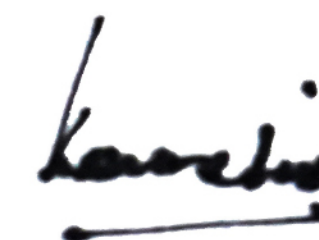

Dr. M.A. Singh
Director

Message from the Medical Superintendent



After decades of providing affordable quality health care service as a leading tertiary care centre, Shija Hospitals & Research Centre (SHRI) is successfully conducting medical education & training to DNB, Nursing & Paramedical courses and research activities with scientific culture, compassion, empathy & commitment for the sick.

Imbued with renewed vigor and enthusiasms, SHRI is dedicated to extend its services further to produce qualified & efficient medical graduates by starting a new medical college in the name of "Shija Academy of Health Sciences" at Imphal, Manipur- the gateway of 'Act East Policy' of Govt. of India- another feather to its cap. It's a great pleasure to be a part of the administration.



Prof. Kaushik Debnath
MBBS, MD, WHO Fellow
Medical Superintendent



Shija Academy of Health Sciences at a Glance

Shija Academy of Health Sciences (SAHS) offers MBBS course duly approved by the National Medical Committee. SAHS was established in the year 2021 with an objective to provide adequate medical facilities to the people of Manipur and nearby North – Eastern states. The academy is the first home-grown private medical college in North-Eastern India and the existing hospital, ***Shija Hospitals & Research Institute (SHRI)*** is a leading multispecialty hospital in Manipur and the northeast region of India. The hospital offers high-quality healthcare services using cutting-edge technology for the treatment and diagnostic with 24 hours emergency & trauma care unit. It is the first hospital in the State of Manipur to be ISO 9001:2000 certified, NABL accredited laboratory and NABH Accredited hospital in the region.

With sincere devotion towards providing outstanding patient care, pioneering research, and exceptional facilities, ***Shija Academy of Health Sciences*** has designated all-inclusive care centers, with up-to-date medical & Allied Science thriving in conjunction with research and treatment. The close association between our doctors and researchers is one of our unique strengths, making it possible for us to proffer patients with the best care accessible as we contemplate more effective health care facilities be provided to prevent, control, and eventually cure diseases in the future.

Since its inception in 1985 as a mono-practice clinic rising gradually to the first-ever ISO and NABH Accredited Hospital, ***Shija Hospitals & Research Institute (SHRI)***, a 350 Bedded Hospital with all clinical specialty departments, continues to have a meaningful journey and looks forward to a remarkable future ahead by adding ***Shija Academy of Health Sciences*** in the field of Medical & Health Education.

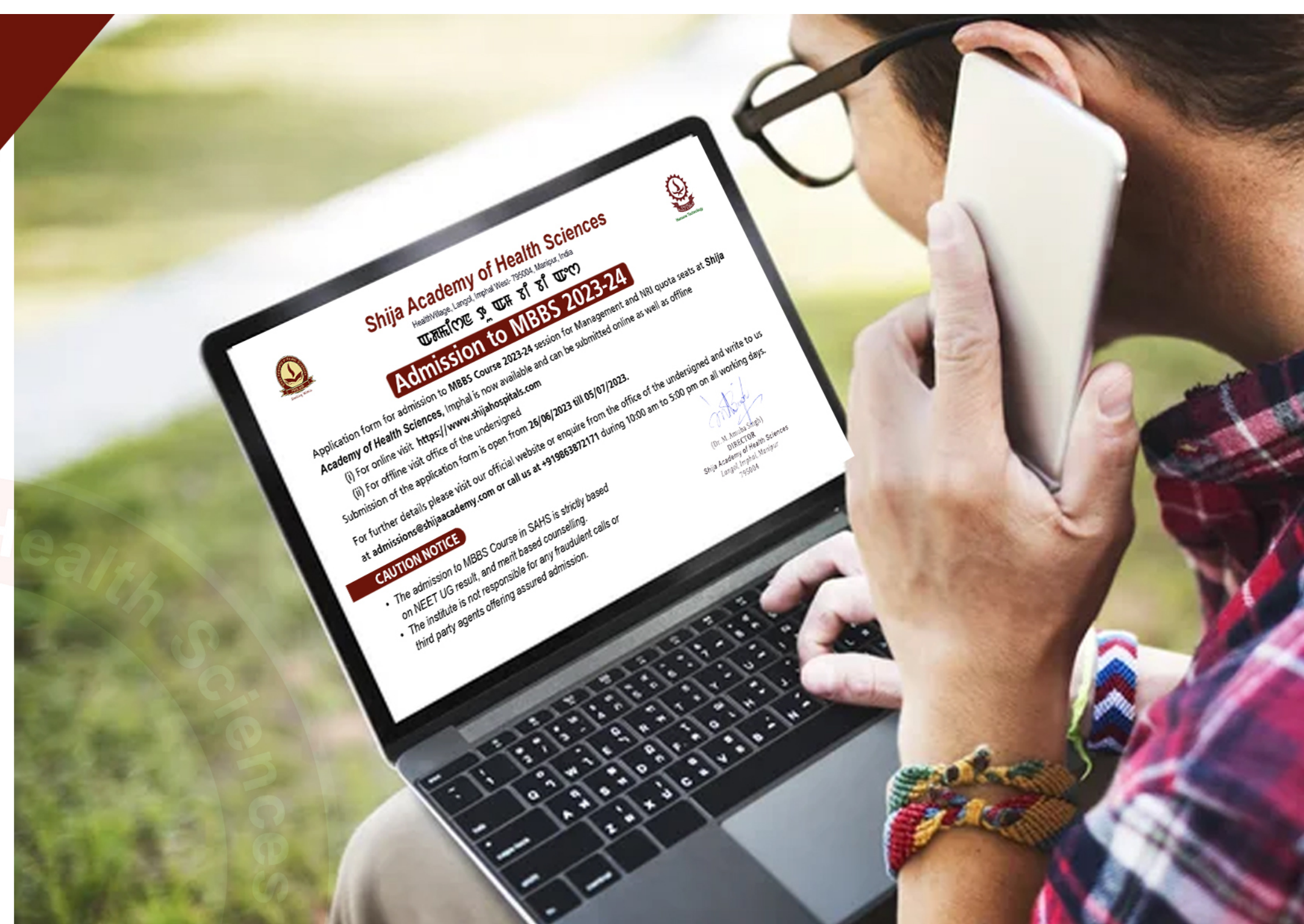


To evolve into a globally recognised medical centre by 2029 by focusing on **exceptional patient experience, academic excellence and commitment to advancing healthcare standards.**

Customer focused healthcare services
Research & Development
Safety Culture through Quality System
Networking
People Development
Continuous Learning & Improvement



Integrity
Passion for Excellence
Compassion
Valuing all including Self



• Basis of Admission

Admission will be strictly based on the NEET UG 2024 Result.
The number of seats for the MBBS course is 150 per year.

• Admission to MBBS Course:

Candidates who have qualified NEET UG 2024 only are eligible to apply for the academic session 2024-25. Application form for admission to MBBS course at SAHS will only be available online and can be submitted through the link <http://www.shijahospitals.com>

Counselling for selection of candidates for admission to MBBS course 2024-25 will be conducted by the Counselling Authority designated by the Govt. of Manipur.



Humane Technology

শীজা হাসপাতাল ও গবেষণা প্রতিষ্ঠান
Shija Hospitals & Research Institute Pvt. Ltd.

1st NABH Medical College Hospital in NorthEast India
HealthVillage, Langol, Imphal West- 795004, Manipur, India.
email : contact@shijahospitals.com Website : www.shijahospitals.com



H-2023-1206

Course Fees : MBBS (Duration 4.5 Years)

A. Category : State Government Quota - 63 Seats

Annual Tuition Fee INR 5,00,000

B. Category: Management Quota - 64 Seats

Annual Tuition Fee INR 17,00,000

C. Category : NRI Quota - 23 Seats

Total Course Fee USD 2,00,000 (One time payment)

Admission Fee INR 75,000 (One time payment)

Cauton Fee INR 25,000 (Refundable)

Note: The tuition fee will remain same for the entire duration of the course, subject to inflation adjustment, as considered appropriate by the State Fee Regulatory Authority, which could be at the rate of 5% or on the basis of Consumer Price Index (CPI) However caution deposit (Refundable after completion of course) and admission fee is to be paid only at the time of admission along with applicable course fee.

Mode of payment:

Demand Draft in favour of

"**Shija Academy of Health Sciences**" payable at Imphal

Hostel, Mess and Utility Fees for 2024-25 Batch

Room Category	Hostel per semester	Mess & Utility Deposit per semester
1. Triple Sharing Non AC (Attached Bathrom)	INR 58,000	INR 36,000
2. Triple Sharing Non AC (Common Bathrom)	INR 51,000	INR 36,000

Note:

* Triple sharing Non - AC (Attached Bathroom) & Triple sharing Non-AC (Common Bathroom) shall be allotted subject to availability of the rooms.

* Mess and utility fees are subject to change with the increase of student facilities/services and as per the prevailing market rate of relative commodities and electricity tariff.

* Hostel and Mess Utility deposit is payable per semester



Description of the course:

The MBBS course is of four and a half years (41/2) duration, followed by one year of Compulsory Rotating Residential Internship. The undergraduate course in medicine comprises of three phases as per the Competency based Undergraduate Curriculum. The three phases includes

Pre-Clinical Phase / Phase I (13 Months)

Phase I or the Pre-Clinical phase is of 13 months and is preceded by a one month foundation course. This phase comprises of the basic sciences, Anatomy, Physiology and Biochemistry, as well as an introduction to Community Medicine, Humanities and Professional Development. Clinical rotations begin after Phase I.

Para-Clinical Phase/Phase II

At the end of Phase II or the Para-clinical phase (12 months) students will be assessed on the subjects Pharmacology, Pathology and Microbiology.

Phase III Part I & Phase III Part II

At the end of Phase III part I(13 months) students will be assessed on Forensic Medicine, Community Medicine, Ophthalmology and Oto-rhinolaryngology.

Phase III Part II (13 months) includes medicine and allied specialties, surgery and allied specialties, Child Health and Obstetrics & Gynaecology.

A block posting in Community Health is an integral part of each stage. Posting in mission hospitals and secondary care centers is a unique feature of medical education. The internship (12 months) comprises of posting in Community Health, Medicine, Surgery, Obstetrics & Gynaecology, Child health, Orthopaedics, Emergency Medicine and short electives in various specialties. All these are as per the guidelines of the National Medical Commission.



Discipline



All the students are expected to maintain good character, discipline and decorum befitting of medical students in and outside the Institute premises. If any student is found indulging in ragging or any other undesirable, illegal, antisocial or destructive activities in the Institute and Hostel premises or outside the Institute, she/he is liable to pay fine, detention of one semester or rustication from the hostel/ Institute. Such authority for taking disciplinary action is vested with the Dean/Director of the Institute.

- Anti-Ragging

Ragging is strictly prohibited in the campus of the Shija Academy of Health Sciences. It is illegal and against the law of the land to directly or indirectly commit, participate in, abet or propagate ragging. The academy will take strict actions against those found guilty of ragging and/or of abetting ragging.

- Possession of Illicit Drugs, Alcohol, Tobacco, Cigarettes etc.

Smoking is forbidden in the premises of SAHS. Students should not consume or serve alcohol on any occasion in the academy's campus. Severe disciplinary actions will be taken against those who are found to force fellow student to consume alcohol. The Indian Penal Code classifies possession of banned drugs (like marijuana, cocaine, heroin etc.) as a criminal offence and possession or use of such drugs will result in expulsion from the academy.

- Involvement in Strikes & Criminal Acts

It is illegal to get involved in strikes or criminal acts. Involvement in any sort of violence or disturbance that affects the peace and tranquility both within/ outside the academy or any criminal acts/ offences as defines in the Indian Penal Code 1860 may result in rustication from the academy. Immoral activity including use of foul language, gestures or any form of abuse would be liable for severe disciplinary action.

- Wifi

Wifi provided in the classrooms & hostels is solely for academic purposes. Any form of inappropriate use is highly condemnable.

Ref. No. SAHS/Est-008/22-02


Date: 18/04/2022

OFFICE ORDER
ANTI- RAGGING SQUAD

The Anti-ragging Squad in **Shija Academy of Health Sciences**, Langol, Imphal is constituted as follows:

COMPOSITION:

Sl. No	Name & Designation	Status in the Committee
1.	Manjushree Takhellambam, <i>Administrative Officer, SAHS</i>	Chairperson
2.	Dr. Khrieketouzo Chielie, <i>Associate Professor of Anatomy & Gents Hostel Warden</i>	Member
3.	Dr. Th. Rubee Chanu, <i>Assoc. Prof. of Microbiology & Ladies Hostel Warden</i>	Convenor
4.	Dr. Soram Goutam, <i>Asst. Prof. of Community Medicine</i>	Member
5.	Dr. Wangol Kiyam, <i>Asst. Prof. of Pathology</i>	Member
6.	Dr. Ringnahring T., <i>Asst. Prof of Forensic Medicine</i>	Member
7.	Mr. Mutum Sunder Singh, <i>Commander, Security</i>	Member
8.	Laishram Surjit Singh, <i>Security, Boy's Hostel</i>	Member
9.	Yumnam Narandev Singh, <i>Security, Boy's Hostel</i>	Member
10.	Loitongbam Ranjana, <i>Security, Girl's Hostel</i>	Member
11.	D.K. Tungmui, <i>Security, Girl's Hostel</i>	Member


 (Dr. M. Amuba Singh)
 DIRECTOR
Shija Academy of Health Sciences
 Langol, Imphal

Ref. No.SAHS/Est-008/22-01

Date:- 18/04/2022

OFFICE ORDER
ANTI-RAGGING COMMITTEE


The Anti Ragging Committee in **Shija Academy of Health Sciences, Langol**, Imphal is constituted as follows:

COMPOSITION:

Sl. No	Name & Designation	Status in the Committee
1.	Dr. Th. Bijoy Singh, <i>Prof. & HOD of Forensic Medicine & Chief Warden</i>	Chairperson
2.	Dr. Kaushik Debnath, <i>Professor of Pathology & Medical Superintendent, SAHS</i>	Member
3.	Dr. N. Saratchandra Singh, <i>Prof. & HOD of Anatomy & Sub-Dean Academics</i>	Member
4.	Dr. K.C, Associate, <i>Professor of Anatomy & Gents Hostel Warden</i>	Member
5.	Dr. Th. Rubee Chanu, <i>Associate Prof. of Microbiology & Ladies Hostel Warden</i>	Convenor
6.	Dr. Moirangthem Niteshore Singh, <i>Assistant Professor of ENT</i>	Member
7.	Ms. Kshetrimayum Sanathoibi, <i>Representative of Students</i>	Member
8.	Mr. Phurailatpam Natraj Sharma, <i>Representative of Parents</i>	Member
9.	Mr. Salam Sibananda Singh, <i>Representative of Non-teaching Staff</i>	Member
10.	Mr. P. Khogendra Singh, <i>Representative of Civil & Police Administration</i>	Member
11.	Mr. Khaidem Surjit Singh, <i>Representative of Local Media</i>	Member
12.	Ms. Sophia Rajkumari, <i>Representative of NGO involved in youth activities</i>	Member

Contact Numbers:

- i) Chairperson & Chief Warden: **9402882556**
- ii) Convenor & Ladies Hostel Warden: **9662665237**
- iii) Member & Gents Hostel Warden: **7407735727**


 (Dr. M. Amuba Singh)
 DIRECTOR
Shija Academy of Health Sciences
 Langol, Imphal

DEPARTMENTS

ANATOMY



Facilities & Services:

- The Department consists of air conditioned dissection hall that is well lighted, equipped with multimedia, provided with models, charts, Radiogram with X-Rayview box and skeleton. It is also provided with a mortuary cooler for storage and cooling of cadavers. Human cadavers are available for dissection purpose.
- Embalming room equipped with embalming machine and embalming table.
- Museum is equipped with models and Charts of gross anatomy, embryology and Neuroanatomy. It also has articulated and dis-articulated skeletons and carefully selected X-ray, CT and MRI films for student learning activities.
- The Department is equipped with a furnished, spacious, well ventilated histology laboratory with 60 Binocular microscopes and 5 dissection microscopes with screen for demonstration of histological slides.
- Research laboratory is also available in the department comprising rotary microtome, sledge microtome, incubator, hot plate, water bath, slide drying plate and dissecting microscope.
- Departmental library has latest books and journals with air conditioned sitting arrangement.
- Demonstration rooms are available with audio-visual aids.



BIOCHEMISTRY

Facilities & Services:

- Well Equipped Practical Laboratory for UG Students
- Central Diagnostic Laboratory, which offers 24/7 diagnostic services in various sections such as serology, immunoassay and body fluids analysis. Conventional methods to newer technology testing are done in various sections.
- Central Research Lab
- Department Library
- Demonstration Rooms
- Audiovisual Teaching facilities e.g. OHP, LCD, Illustrations in Biochemistry.

PHYSIOLOGY

Facilities & Services:

- The Department consists of air conditioned dissection hall that is well lighted, equipped with multimedia, provided with models, charts, Radiogram with X-Ray view box and skeleton. It is also provided with a mortuary cooler for storage and cooling of cadavers. Human cadavers are available for dissection purpose.



PHARMACOLOGY

Facilities & Services:

- Demonstration Rooms are equipped with audio-visual system for scientific sessions
- Well equipped Clinical Pharmacology laboratory
- Museum with charts, drug specimens, catalogues, portraits of eminent scientists and the charts depicting historical development in pharmacology
- Departmental library
- Animal house having sufficient numbers of experimental animals of different species to be used for various research activities
- Computer Assisted Learning Laboratory along with Software simulator for studying experimental pharmacology
- Well equipped Research Laboratory

MICROBIOLOGY

Facilities & Services:

- Clinical laboratory is a part of the central laboratory of the hospital, fully equipped with latest equipments of advanced technology with automated diagnostic facilities for routine microbiological investigations in Bacteriology, Serology, Immunology, Parasitology, Mycology, Virology & TB Culture, Blood Culture System and Drug Sensitivity Testing of Bacterial Isolates.
- Practical laboratories for students in microbiology
- Demonstration Rooms are equipped with audio-visual system for scientific sessions
- Departmental library
- Research laboratory
- Museum with mounted specimens, charts and illustrations

PATHOLOGY

Facilities & Services:

- The department is provided with excellent infrastructure for imparting, teaching, hospital services and the department also provides facilities for clinical, hematology and histopathological experiments.
- Departmental library has the latest books and journals with air conditioned sitting arrangement
- Audio visual teaching facilities i.e. OHP, LCD projector
- Well Equipped Research lab
- Demonstration rooms are available with audio-visual aids.
- Well Equipped Blood bank facilities since inception
- Museum with mounted specimens with catalogues, charts and micrographs and portraits of important personalities and events in the history of Medicine.
- The Hematology and Clinical Pathology services include complete hemogram, hemoparasite detection, ESR, bone marrow aspiration and biopsy, reticulocyte count, basic coagulation workup, urine routine and microscopic examination and fluid cell counts.

FORENSIC MEDICINE

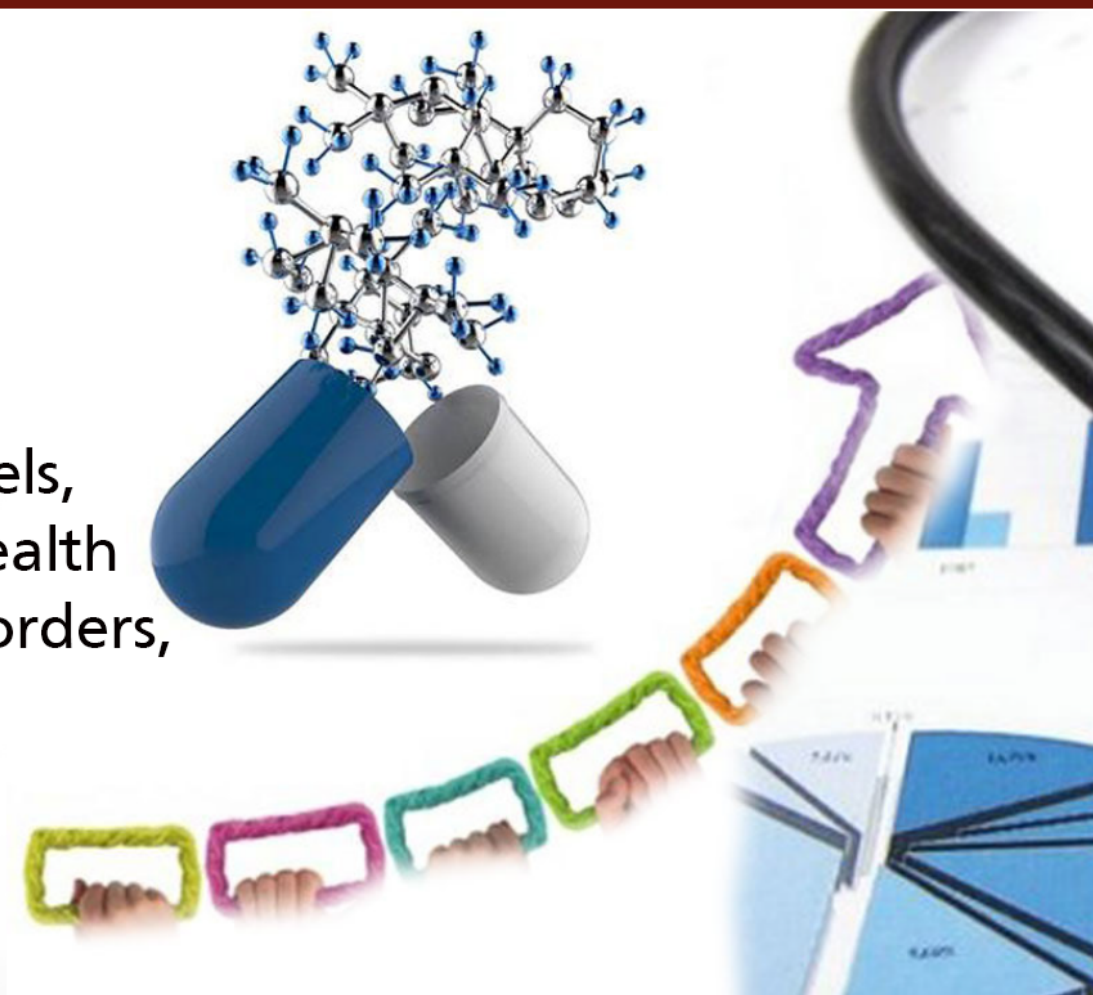
Facilities & Services:

- The department has modern amenities with well-planned and furnished faculty rooms and offices, equipped with computers for the faculty members and Wi-Fi internet facility, non-teaching staff rooms.
- Practical laboratories for students
- Demonstration Room, equipped with audio-visual system for scientific sessions
- Departmental library
- Research laboratory
- Museum with mounted specimens, charts and illustrations

COMMUNITY MEDICINE

Facilities & Services:

- Museum with charts, diagrams, models, specimens & catalogues related to health education, sanitation, nutritional disorders, family planning, epidemiology etc.
- Departmental Research Laboratories
- Departmental library, etc.



INFRASTRUCTURE

LECTURE HALL



Facilities & Services:

- Four Air Conditioned Lecture Theatres with a seating capacity of 180 students each.
- All Lecture Theatres are equipped with world class audio-visual aids & are under 24 hours CCTV surveillance.
- All Lecture Classes are recorded & digitally linked with all teaching area
- All Lecture Theatres have a facility for E- Learning. We utilize the every available amenity to impart high quality e-Lecture Hall

TEACHING ROOM

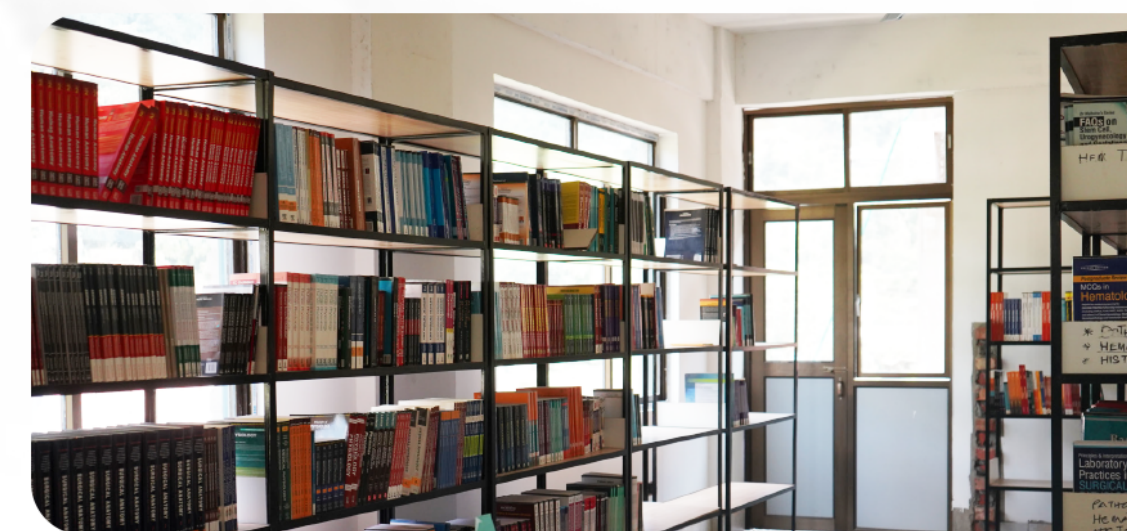
Facilities & Services:

- Four Air-conditioned Teaching Rooms each with 25 seating capacity and an other Four Air-conditioned Teaching Rooms each with 50 seating capacity of students.
- All Teaching Rooms are equipped with world class audio-visual aids & are under 24 hours CCTV surveillance.
- All Teaching Rooms are smart class enabled and E- Learning facilities.



LIBRARY

Our Central Library is fully air conditioned with comfortable learning environment and one of the finest libraries, which collectively support the teaching, research and extension programmes of the College. The Central Library is well equipped with modern facilities and resources in the form of books, journals, back volume of journals, theses, WHO publications, CD ROMs and internet services. The library is equipped with 40 computers. This facility enables the users to prepare academic materials and access electronic resources.



RESIDENTIAL:

- Spacious double occupancy rooms with almirahs, tables, chairs, cots and beds provided individually.
- R.O. water system facility for safe drinking water.
- Some Rooms are provided with Air conditioners for the students who opt such rooms.
- 24/7 Security, Care Taker and Housekeeping facility.
- Wi-Fi connections are available for students from 4 pm to 9 pm.
- Study rooms are available for the students who want to study separately and individually.
- English and Hindi Dailies are available for the students.
- Student's suggestions / complaints register is available.
- Notice board displays all the relevant notices.
- 24/7 power backup is available in case of electric power breakups/ load shedding.
- Mobile number is displayed in case of emergency. This number can be contacted any time 24/7.
- Boys Hostel warden, Deputy Wardens are available within the premises
- Chief Warden is available within the Campus.

SPORTS AND RECREATION

Indoor:

- State of art facility for students and the faculties.
- Snooker-Billiards, Table – tennis, Carom, modern Gym equipments.
- Along with the Gym, there are halls with television set with digital channel connections and sitting arrangements.

Outdoor:

- Basket Ball, Cricket, Foot ball, Volley Ball and Shuttle Badminton Courts/ grounds are available in the spacious green campus.

MESS / CANTEEN

Mess Facilities for Students and Staff:

- All the people staying in the campus can avail mess facility which provides healthy & tasty foods with quality ingredients.
- Mess committee decides the menu for every week depending on the demand from the student and faculty.
- Patient's food is prepared according to the dietary needs as prescribed by the dietician.

38 Years

of relentless journey of changing
the healthcare landscape of the region.



H- 2023-1206



MC-2188

1600+
Care Givers

31+
Specialties

- 350 bedded super-specialty hospital
- More than 1600 full time care givers including 220 Full time doctor system
- NABH Accredited hospital
- NABL Accredited laboratory
- Guinness world record for removal of the largest neck tumour in the world
- A teaching institute: Shija Academy of Health Sciences (SAHS); 1st homegrown private medical college in NE India with an intake capacity of 150 MBBS students per year
- Post graduate DNB courses in Anaesthesiology, General Surgery, General Medicine, Plastic Surgery, ophthalmology, Emergency Medicine
- Diploma in Otorhinolaryngology
- Shija Academy (Nursing & Paramedical)



Overview of *Shija Hospitals*

Shija Hospitals and Research Institute (SHRI) which began its journey from a mono practice clinic attached to a pharmacy at Paona Bazar, Imphal in 1985 is today a 350 bedded (including 60 Critical Care Beds) multi-specialty hospital with 31 specialties including super-specialty at eco-friendly foothills of Langol, providing secondary and tertiary health care in the region with more than 1450 dedicated trained care givers including 200+ full-time doctors. It is the first NABH Accredited medical college hospital in NorthEast India. SHRI envisions to be a premium & leading brand in healthcare services globally by 2026, recognized by our customers for our holistic approach, personal touch, and technological advancement.

Striding towards bringing affordable world class healthcare at the doorsteps, Shija is now providing many facilities which are yet not available in government as well as other private hospitals in Manipur and its neighboring states. This has helped to prevent the state's exchequer and also removing the inconveniences of patients travelling outside the state for healthcare reasons.

Apart from being empanelled by 16 central government organizations, 2 International NGOs' and 20 TPAs' and Insurance Companies, Shija Hospitals is also empanelled by the Governments of Manipur, Nagaland and Mizoram. It is also being recognized as a partner hospital by Smile Train Inc, USA.

SHRI strictly follows the system of segregation of bio-medical waste at source and ultimately appropriate treatment and disposal of waste through incinerator, shredder, sharp pit, deep burial etc. for the safety of environment. The only Common Bio Medical Waste Treatment Facility in the state is operated by Shija Hospitals and is recognized by Manipur Pollution Control Board.

Shija is also a teaching institute providing BSc nursing, paramedical and 3 years post graduate DNB courses in General Surgery, Anaesthesiology, General Medicine, Ophthalmology and post MBBS (direct 6 years) DNB course in Plastic Surgery.



Under Shija Overseas Training Program, SHRI in collaboration with AMASI (Association of Minimal Access Surgeons of India), took up the initiative of providing free training to two surgeons and six nurses from Monywa General Hospital, Myanmar for two months in the areas of Laparoscopic surgery, Operation Theatre Technology and Critical Care.

In its endeavor towards developing a good rapport with the neighbouring country of Myanmar, SHRI started the venture of Mission Myanmar in May 2013. So far, three successful missions were ventured wherein 134 cleft lip and palate, 179 cataract blindness and 32 key-hole surgeries were performed for free at Monywa General Hospital, Myanmar.





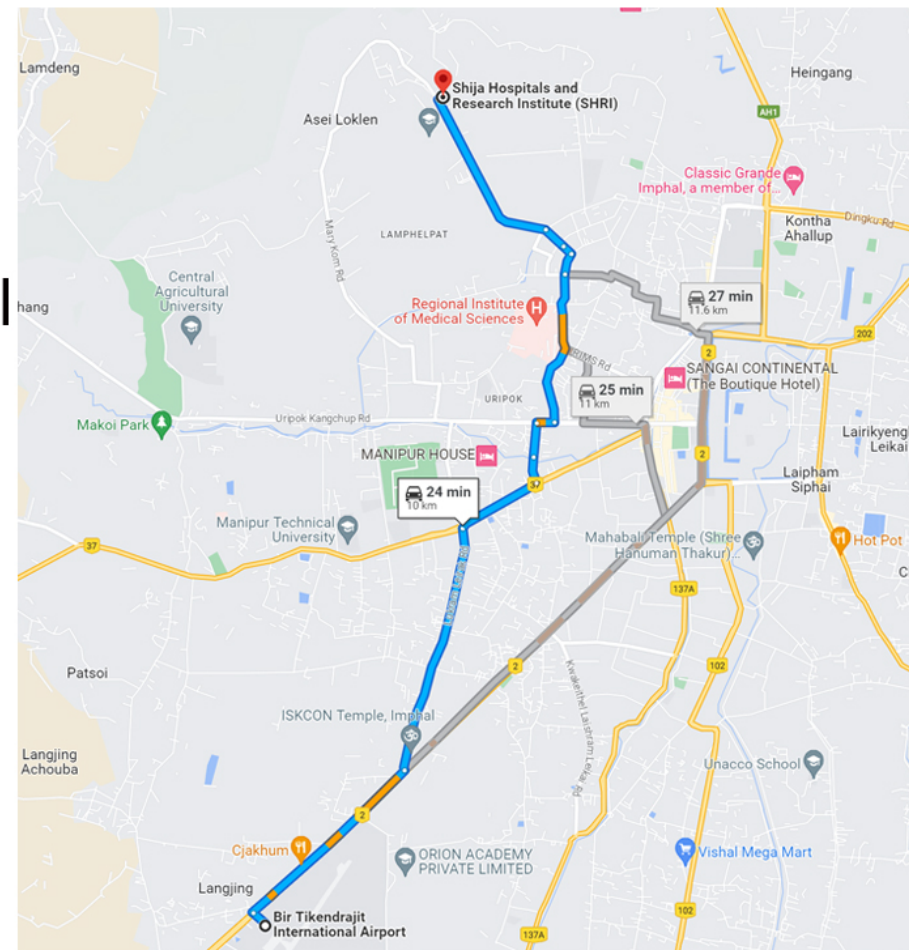
38 years of relentless journey towards changing the healthcare landscape of the region

38th
of Medical Research
Shija Hospitals

Shija is a World Bank Grantee for winning World Bank 'Development Marketplace Project' competition 2014 for innovative solutions. Dr. Palin Khundongbam, Chairman cum Managing Director, Shija Hospitals has been recognized as Healthcare Ambassador of India, NETV People's Choice of NE India, and amongst 25 Healthcare Influencers of India, Living Legends of Healthcare in India and Influencers of NE India.

Shija Hospitals is easily approachable from three important locations of the city – Chingmeirong, Main Imphal Market and Iroishemba. Imphal International Airport is 11 km, ISBT 5 km

With India's Look East/ Act East Policy, Manipur's favourable location bordering with Myanmar, surface and air connectivity with ASEAN nations, meeting point of two superpower nations -China and India, huge tourism potentials of the state especially in war (Battle of Imphal-Biggest in 2nd World War), ecology, sports and cultural arenas - Shija strongly believes that Manipur, one day, will become one of the healthcare destinations of South East Asia. Our future project for medical value tourism includes enhancement of the existing facilities and addition of Cardiac Science, Infertility treatment, Wellness Parks etc.



Shija Academy of Health Sciences



Shija Hospitals

- A **350 bedded** Super Specialty Hospital
- Quality Assurance: **NABH** accredited medical college hospital, **NABL** certified Laboratory
- A teaching institute: **Shija Academy of Health Science (SAHS)** - 1st homegrown private medical college in NE India, **Shija Academy (Nursing & Paramedical)**, **PG DNB Courses** in Emergency Medicine, General Medicine, General Surgery, Ophthalmology, Anesthesiology, Plastic Surgery, DLO in ENT.
- A leading kidney care centre - **highest number** of haemodialysis in NE India, **98 Kidney transplants** till date and still counting
- More than 1600 caregivers including **220 full time doctor** system
- **Guinness World Record** for removal of the largest neck tumour in the world
- Critical care - **64 critical care beds** with **8 critical care** specialists and **PG students**
- Comprehensive heart care with **angioplasty, device closure and open heart surgery** facilities
- Orthopaedics - including **joint replacement, spine and arthroscopic** surgery
- **Minimal Access Surgery** - Eastern India's pioneer and leading brand
- Total **stone solutions** under one roof (KUB, Gall Bladder, CBD Stones)
- **Shija Institute of Neurosciences** - taking care of brain, spine and nervous system problems by highly skilled team of neurosurgeon, neurologist & interventional radiologist
- **Interventional Radiology** - providing non invasive treatment for stroke (mechanical thrombectomy, aneurysm coiling), renal/leg/carotid angioplasty and many more
- **Plastic surgery** - a leading cosmetic and reconstructive surgery centre with free treatment for **cleft lip and palate under Smile Train**
- **Shija Eye Care Foundation** - mentored by LAICO and Aravind Eye Care Systems, Madurai with **Corneal transplant** and free cataract surgery facilities
- **Cochlear Implant Surgery**
- **Laser Varicose Treatment**
- **Reproductive Medicine (Infertility Treatment)**
- **Shija common biomedical waste treatment facility** - a PPP model
- **Mission Myanmar** - developing a goodwill with Myanmar by performing 339 surgeries free of cost at Monywa General Hospital, training of 2 surgeons and 6 nurses from Myanmar under Shija Overseas training program and treating more than **2500 Myanmar patients** since 18th August 2018.

মিঃ পলিন খুন্ডংবাম

Shija Hospitals & Research Institute Pvt. Ltd.

1st NABH Accredited Medical College Hospital in NorthEast India
Emergency - 7085012345 Front Office - 9007 9007 94 | 9611 60 9611
Email: contact@shijahospitals.com Website: www.shijahospitals.com



HealthVillage, Langol, Imphal West-79
Manipur, India

SCOPE OF SERVICES (Clinical Services)

- Anaesthesiology & Critical Care
- Cardiothoracic & Vascular Surgery
- Clinical Haematology
- Dental Sciences
- Gastroenterology (Medicine)
- General Surgery
- Neonatology
- Neurosurgery
- Plastic & Reconstructive Surgery
- Psychiatry
- Radiology & Imaging Sciences
- Physiotherapy & Rehabilitation
- Emergency & Trauma Including Emergency Medicine
- Ophthalmology including Corneal Transplant
- Orthopaedics including joint replacement
- Otorhinolaryngology (ENT) including Cochlear Implant
- Urology including Kidney Transplant
- Cardiology
- Clinical Biochemistry
- Clinical Pathology
- Dermatology
- General Medicine
- Interventional Radiology
- Nephrology
- Obstetrics & Gynaecology
- Surgical Oncology
- Paediatrics
- Respiratory Medicine

SCOPE OF SERVICES (LABORATORY SERVICES)

- Clinical Bio-chemistry
- Clinical Pathology
- Clinical Hematology

SCOPE OF SERVICES (TRANSFUSION SERVICES)

- Shija Blood Centre



• SCOPE OF SERVICES (HEALTH CHECK)

- Basic Male/Female
- Basic Plus Male/Female
- Premium Male/Female
- Premium Plus Male/Female
- Child Health Check

SCOPE OF SERVICES (DIAGNOSTIC SERVICES)

- Audiometry
- ECG
- ERCP
- Spirometry
- X-Ray
- CT Scanning
- Echocardiogram
- Mammography
- Tread Mill Test
- Uro Dynamic Studies
- DSA Lab
- FFA, OCT, VFA
- MRI
- Ultrasound

SCOPE OF SERVICES (SUPPORT & OTHER SERVICES)

- Burns Unit
- Ambulance
- Psychology
- Dialysis
- Mortuary
- Speech & Language Therapy
- Dietetics & Nutrition
- Pharmacy

SERVICES NOT AVAILABLE

- Bone Marrow Transplant
- Endocrinology
- Heart Transplant
- Pancreas Transplant
- Diabetology
- Geriatrics
- Nuclear Medicine
- Rheumatology



OUR MEDICAL FEATS

- Guinness world record for removal of the largest neck tumour in the world.
- 1st in Eastern India to start cryofreezing for piles.
- 1st in NE India to perform Free Flap Surgery for sole defect.
- 1st to install Harmonic Scalpel (USA) for bloodless surgery in Asian sub continent.
- 1st in Eastern India to install IRC (USA) and Doppler Guided Haemorrhoidal Arteries Ligation (DGHAL, Germany), Diode LASER (Germany), non cutting treatment technologies for piles.
- 1st in NE India to perform self expanding metal stenting for oesophageal cancer.
- Recognized as Partner Hospital by Smile Train Inc., USA.
- 1st in NE India to start LASER treatment for varicose veins.
- 1st in NE India to perform Radio Frequency Ablation (RFA) for liver cancer.
- 1st in NE India to perform more than 7 successful re-implantations of totally amputated limbs.
- 1st in Manipur to perform Uterine Artery Embolization (treatment of bleeding during/after childbirth without open surgery).
- 1st to perform full fledged Laparoscopic or Key Hole Surgery in Manipur.
- 1st in Manipur to install Video Endoscopy with ERCP (Endoscopic Retrograde Cholangio-Pancreatography – non excisional removal of stone from the common bile duct or stent placement to treat obstruction inside the CBD).
- 1st to perform breast implant surgery in Manipur.
- 1st to introduce full fledged Endo-Urology facilities in Manipur (PCNL – removal of kidney stone through key hole surgery, URS – non excisional removal of stone from the ureter, ESWL – breaking down of kidney stones from outside the body using ultrasonic waves, CLT – non excisional removal of stone from the urinary bladder, TURP – Transurethral Resection of Prostate, TURBT – Transurethral Resection of Bladder Tumour).
- 1st to perform Laparoscopic Nephrectomy in Manipur.
- 1st to install Alcon Laureate World Phaco System (Cold Phaco) in Manipur – Gold standard key hole surgery technology for cataract.
- 1st to perform Single Incision Laparoscopic Surgery (SILS) in Manipur.
- 1st to introduce Retrograde Intra-renal Surgery with the installation of Holmium LASER (Germany) in Manipur – most patient friendly non excisional treatment option for kidney stones.
- 1st to install MICROAIRE Power Assisted Liposuction System (USA) in Manipur for body reshaping by removal of unwanted fat cells from the body.
- 1st to install Narrow Band Imaging in Manipur – most advanced endoscopic examination to rule out pre-malignant and malignant lesions (wound, ulcer, abscess or tumour) of the esophagus, stomach and large bowel.
- 1st in Manipur to perform Surgical Cerebral Aneurysm Clipping for bulge in the wall of a blood vessel inside the brain.
- 1st in Manipur to perform Kidney Transplant.
- 1st in Manipur to introduce Interventional Radiology.
- 1st in Manipur to perform Bronchial Artery Embolization for active bleeding inside the lungs.
- 1st in Manipur to perform leg angioplasty (opening of blocked artery in the leg).
- 1st in Manipur to perform renal angioplasty (opening of blocked artery that supplies blood to the kidney).
- 1st to install Endoscopic Ultrasound (EUS) in Manipur to minutely investigate difficult and perplexing diseases within the abdomen.
- 1st in Manipur to install Sonopet Ultrasonic Aspirator for faster, clear, safer and bloodless removal of brain tumour.
- 1st in Manipur to install Complete Capsule Endoscopy Unit (PillCam) to record internal images of the gastrointestinal tract for use in medical diagnosis.

- 1st in Manipur to perform Pancreatic Tumour Removal laparoscopically.
- 1st private hospital in the state to perform knee replacement and hip replacement surgeries by its own orthopaedic surgeons.
- 1st in Manipur to perform Laparoscopic Choledochal Cyst Removal for rare congenital dilations/enlargements of the bile ducts, a network of long tube-like structures that carry bile from the liver to small intestine for digestion).
- 1st in Manipur to perform Renal Aneurysm Coiling and Arterio Venous Embolization for bleeding inside the kidneys.
- 1st in Manipur to perform Carotid (Neck) Angioplasty to treat a stroke patient by opening the blocked carotid artery.
- 1st in Manipur to perform mechanical thrombectomy with aspiration (an advanced treatment for acute stroke by removal of blood clot from a blood vessel inside the brain) without any open surgery.

Departments at *Shija Hospitals (SHRI):*



Anaesthesiology & Critical Care : Our Anaesthesiology Department is accredited by the National Board of Examination under Ministry of Health, Govt. of India for 3 years post graduate DNB course in anaesthesiology. The foundation of this department is the clinical skill of our anaesthesiologists who have received training and accomplishments from the best institutes around the country. The Anaesthesia Consultants are available round the clock on rotation basis to ensure highest standards of care. The team members are well trained to cater to all kinds of surgeries including high end surgeries like open heart surgery, renal transplant surgery etc. The anaesthetists are helped by the state of the art anaesthetic equipments with Savoflurane which is one of the best anaesthetics ideal for general anaesthesia. Well-trained staff and availability of latest technology and drugs makes this as one of the safest places to get anaesthesia. Services provided also include pre operative anaesthesia check-up (PAC), 11 operation theatres including 6 modular OTs and 6 minor OTs, epidural anaesthesia for painless labour, U.S.G. guided regional blocks for post operative anaesthesia, awake fibre optic intubations, percutaneous tracheostomy, 61 critical care beds, anaesthesiologist supervised 10 bedded post operative ward, post-operative pain management and 24 X 7 emergency anaesthesiology services.

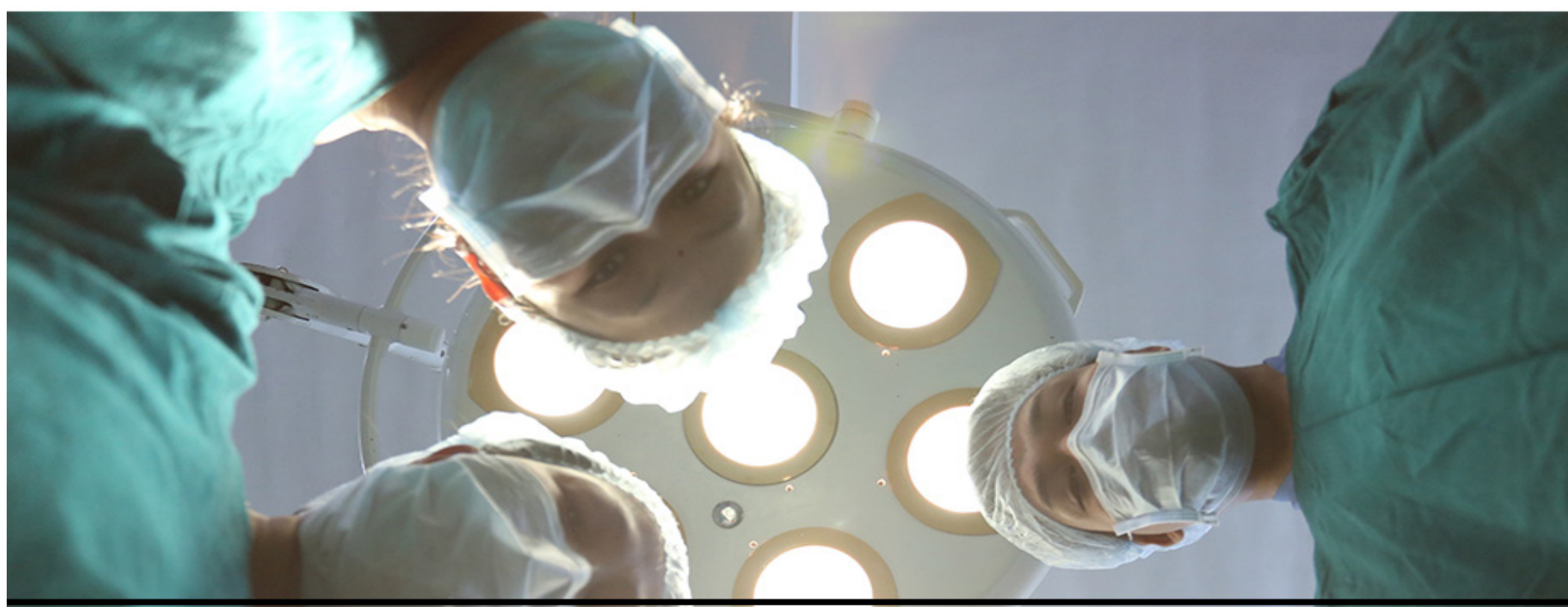


Shija Heart Beat: Shija Heart Beat is one of the best heart care centres in the region, performing a multitude of treatments and procedures in cardiology and cardiothoracic surgery. Our team of cardiologist and cardiothoracic & vascular surgeon are trained at the top institutes in India and are completely dedicated to the treatment for coronary heart diseases. Our advanced infrastructure supports the complex nature of the cardiac care provided. Third generation Cath Lab, Cardiac Critical Care Units and Intensive Care Units support our experienced cardiologists and post-operative care teams, making us the most sought-after Cardiology hospital in the region. Shija Heart Beat is dedicated to the diagnosis and surgical treatment of cardiac, thoracic and vascular diseases. Our department carries out variety of surgeries, from repair of congenital heart defects in infants to coronary by pass surgeries in octogenarians. Non operative closures of holes in the heart of children (0 to 18 years) are regularly done in collaboration with State Health Society, Govt. of Manipur.

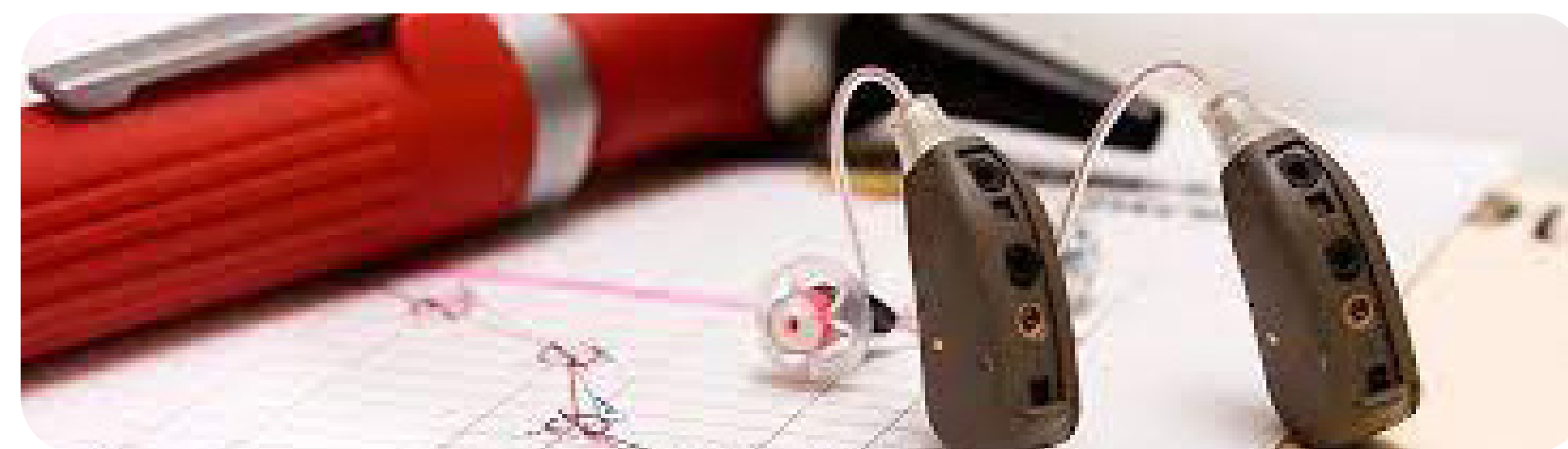
Clinical Laboratory: Our clinical laboratory is the First hospital based NABL accredited laboratory in the state with the scope of services including Clinical Biochemistry, Clinical Pathology, and Haematology. We provide state-of-the-art diagnostic services 24 hours a day and 7 days a week with a primary focus that 'patients come first', reporting results that help provide answers for physicians and patients. A medical diagnostic laboratory is more than the backbone of a treating physician; it is the very soul of diagnosis. Through the application of leading-edge technology, the laboratory services at Shija Hospitals prides itself on providing rapid turnaround time, affordable inpatient & outpatient testing and superior customer service. Shija Clinical Laboratory has also developed a system called critical values call back protocol. Critical values also known as panic or alert values are laboratory results that indicate life threatening situation for the patient. Because of their critical nature, urgent notification of a critical value to the appropriate healthcare professional is done through telephonic conversation.



Shija Molecular Laboratory: Molecular diagnostic testing combines laboratory testing with the precision of molecular biology and has revolutionized the way clinical and public health laboratories investigate the human, viral, and microbial genomes, their genes, and the products they encode. Most important, by adopting molecular diagnostics, laboratories are having a greater impact on the treatment and care of patients. These advanced systems are helping physicians treat infectious diseases sooner and with more precision.



Emergency & Trauma Unit: It is the 'Golden Hour' and the 'Platinum Ten Minutes' that typify the significance of Emergency Medical Services. It is a well-accepted fact that a patient who receives basic care from trained professionals and is transported to the nearest healthcare facility within 15-20 minutes of an emergency has the greatest chance of survival. Hence, we at Shija Hospitals leave no stone unturned in providing the best services in the shortest time possible by trained and experienced medical staff. We actively leverage our multi-specialty prowess to deliver the crucial edge in emergency care. We have cardiologist, neurosurgeon and trauma specialists who are on 24x7 standby for expert care during a medical emergency. All laboratory and imaging test results are available without delay leading to quick diagnosis and rapid treatment.



Audiology and Speech-language Pathology is headed by well qualified Audiologist & Speech-language Pathologist who has specialized in identifying, diagnosing, treating & monitoring disorders of auditory (hearing) and vestibular system (balance) of the ear and works to prevent, assess, diagnose, & treat speech, language, social communication, cognitive communication & swallowing disorders in children and adults.



Shija Blood Bank & Transfusion Services: We are committed to provide quality health care service to the society. State-of-the-art Shija Blood Bank & Transfusion Services, a paradigm of Public Private Partnership, funded by North East Council, Shillong and Govt. of Manipur is the first NABH accredited blood bank with Nucleic Acid Test (NAT) facility in Eastern India.

The department is equipped with world class equipment and a highly trained team of technicians and clinicians who ensure best results. The Department of Transfusion Medicine and Blood Bank offers the following facilities for patients and donors

- Blood donation in a congenial environment with facility of post-donation counseling
- Availability of blood donor registry for both positive & negative group patients
- Plateletpheresis, multi-component collections and therapeutic aphaeresis for indicated patients
- Availability of leukoreduced blood and blood components
- Blood grouping, cross-matching and antibody screening of all patients by latest automated technology
- Blood donor screening by both automated chemiluminescence technology & NAT technology
- Dedicated, regular Quality assurance program ensuring quality, adequacy & safety of blood transfusion
- Transfusion management of critically ill patients, thalassemia, haemophilia, major surgeries, coagulopathies, autoimmune disorders, platelet disorders etc
- Specialized blood and blood components for paediatric transfusion
- Consultancy by Transfusion specialist

The clinical team consists of renowned specialists who have deep expertise and ability in ensuring the safety of all transfusion activities.

Psychiatry: At Shija Hospitals, our team of distinguished psychiatrists and psychologists understand that treating mental health disorders involves specialized therapy and empathetic approach. Our multidisciplinary team evaluates children and adults via personal interviews, assessment, psychological testing and laboratory tests and offer customized treatment combining the quality of life programs, support programs, workshops, psychotherapy and counselling.

A few of the specific treatments and services for different groups include:

Pharmacotherapy (medication) : This therapy is given for issues such as de-addiction treatment for alcohol, nicotine and substance abuse, individual counselling, premarital counselling, career counselling, identity disorders/gender reassignment, marital therapy, family therapy.

Children and adolescents – We offer psychiatric services for problems such as learning difficulties, sleeping and eating disorders, over-activity and poor concentration (ADHD), conduct problems, separation anxiety, autism, depressive disorders, sexually deviant behaviour, drug abuse dependence

Adults – Therapy is given for various disorders, including anxiety disorders, mood disorders, psychotic disorders, sleep and eating disorders, sexual disorders, gender identity disorders and substance-related disorders.

Geriatric – We provide services for disorders such as dementia and delirium faced by geriatric population. We also conduct programs to educate caregivers.

Physiotherapy and Rehabilitation wing: The Physiotherapy Department aims at delivering highly specialized services and physical rehabilitation programs for patients of all age groups and with any ailment or disability arising due to various reasons. The physiotherapy treatment has an application in all the disciplines of modern medicine. The team is responsible for rendering superior quality pre-operative and post-operative physiotherapeutic interventions to the out-patients and in-patients. The Centre has a comprehensive well equipped fitness zone available for exercise and rehabilitation. The rehabilitation includes focus on constant improvement of functional status of the patient. The team employs a proficient approach for patient rehabilitation and actively educates and advises people to perform physical therapies and exercises to restore strength, movement and function, which in turn help in the speedy recovery of a patient.



Surgical Oncology: Surgery is an important component of treatment plan for some patients suffering from cancer. Surgery might help in relieving the symptoms of the patient as well as preventing the cancer from spreading to the other parts of the body. This would further help the patient in better treatment, enhanced survival chances, short recovery times, and minimal treatment side effects. Department of Surgical Oncology at Shija Hospitals actively involves in care of incredibly diverse group of patients with cancer and can provide unique surgical expertise in surgical cases unfamiliar to general surgeons.. The hospital is equipped with the best of infrastructure, state-of-the-art diagnostic modalities and well experienced Surgical Oncologist with extensive experience in delivering comprehensive treatment of cancer to ensure the best patient outcomes. We are the preeminent destination for all cancer treatments and recognized at the best cancer hospitals in India. Our Surgical Oncologist who has specialized in all kinds of surgeries for cancer provides inpatient and outpatient treatment for a number of illnesses like cancers of the oral cavity, larynx, thyroid, lung, breast, gastrointestinal (anal cancer, liver tumour, gastric cancer, colon cancer, rectal cancer, pancreatic cancer etc.)



Radiology & Imaging Science: The department is equipped with technologically advanced medical equipments to render the early and accurate diagnostic output. Shija Hospitals is regarded as one of the best hospitals for radiology in the region. Our Department of Radiology & Image Science is highly specialized and offers diagnostic imaging along with image-guided procedure and therapies. We continuously strive to make technological progressions and improvements so that we can offer the best services to our patients. Being one of the topmost Radiology centres in the region, we offer services like diagnostic radiology and interventional radiology, through which our highly qualified and experienced radiologist performs minimally invasive procedures using ultrasound, X-Ray, MRI Scan, and Computed Tomography (CT) Scans. We also offer state-of-the-art imaging technologies like Doppler facility, DSA lab and other facilities like digital X-ray, mammography, Fluoroscopic Investigations, ultrasonography, and interventional radiology.

Interventional Radiology: Shija Hospitals is the only centre in the state having a qualified full time Interventional Radiologist. The department has a dedicated Cath lab exclusively for interventional radiological procedures. Advanced interventional Radiological procedures are done regularly such as cerebral angiograms, embolizations of cerebral AVMs and Tumors, endovascular coiling of cerebral aneurysms, Intra-arterial thrombolysis for ischemic stroke. Endovascular management for gastrointestinal haemorrhage and percutaneous stenting of biliary system, Trans-jugular portacaval stenting as a therapy for cirrhotic patients to correct bleeding without surgery, Trans-hepatic biliary drainages and stenting of biliary system are also routinely performed.

Plastic Surgery: It is the first private centre in Eastern India to be accredited by National Board of Examination (NBE) to be accredited for post MBBS (direct 6 years) DNB course in Plastic Surgery. The Plastic and Reconstructive Surgery department comprises of a team of highly qualified surgeons and experienced technicians. The team has access to the latest technology available and comes up with effective yet minimally invasive cosmetic reconstruction techniques. Common procedures include facelift, rhinoplasty, liposuction, eyelid surgery, breast reduction, breast augmentation, breast lift, tummy tuck, body lift, hair transplant, laser resurfacing, laser hair removal, tattoo, mole and scar excision,



fat injection, reconstructive surgeries such as cleft lip and palate repair, tissue transfer with local and pedicled flaps for breast reconstruction after mastectomy, skin grafts, hand surgery and multiple others. We take care of the patients' aesthetic needs and provide them the best results along with complete safety and satisfaction. The team adopts high standards of surgical expertise to deliver the patients with best and superior quality care to enhance their appearance so that they can feel more confident about their personality.

Few medical feats of this department include setting of Guinness World Record for removal of the largest neck tumour in the world in 2003, more than 8 successful re-implantations of totally amputated hands and fingers for the first time in North Eastern India.



Shija Dental White: When it comes to preventive healthcare, dental care is often overlooked. At Shija Hospitals, we constantly emphasize that dental care is an integral part of overall healthcare. It is our constant endeavour to provide a comprehensive range of affordable and world-class dental services. At our Dentistry Centre, we offer an extensive range of dental treatments encompassing premium services, progressive cosmetic dentistry and routine dental care. Our services include: Crowns, Bridges and Implants, Orthodontic Treatment (Braces), Root Canal Treatment (RCT), Cosmetic Dentistry, Maxillofacial Prostheses. We have an expert team of dentists covering nearly every field of specialization such as orthodontics, endodontics, prosthodontics, pedodontics, periodontics, maxillofacial surgery. State-of-the-art technology and infrastructure complement our dentists' expertise in providing the highest possible quality of dental care.



General & Minimal Access Surgery: It is Eastern India's pioneer and leading brand in the field of laparoscopic surgery. Department of general & laparoscopic surgery is also accredited for 3 years post graduate DNB course in general surgery. Harmonic Scalpel (USA) for bloodless surgery was installed at Shija Hospitals for the 1st time in Asia in 1997. The department has performed more than 25,000 successful key-hole surgeries till date and still counting. Surgeries are performed by eminent AMASI (Association of Minimal Access Surgeons of India) faculties. It is one of the very few centers in the world to perform ERCP and Cholecystectomy in the same sitting. It is the first centre in the state to perform laparoscopic pancreatic tumour removal. It is also the first centre in North Eastern India to perform laparoscopic choledochal cyst removal. It is the most comprehensive treatment centre for piles, fissure in ano, fistula in ano, rectal polyp, rectal prolapse, colon cancer, pain and bleeding per rectum and 1st in Eastern India to introduce non operative and less invasive treatment solutions for piles like Cryo surgery, IRC, Rubber band ligation, Injection sclerotherapy, LASER, Doppler Guided Haemorrhoidal Artery Ligation (DGHAL), Stapling surgery, Transanal suture rectopexy (TASR).

Both open and key-hole surgery facilities are available in the department for the following:-

- Gall bladder, appendix removal
- Ovary, Uterus (Hysterectomy)
- All types of surgeries for acute pain in abdomen, including problem in liver, intestine, spleen, pancreas and stomach etc.
- Rectopexy (for excessive protrusion per rectum)
- Hiatus hernia, inguinal hernia, intestinal hernia and adhesiolysis
- Paediatric laparoscopic surgery and many others

Only open surgery facility available for:-

- Thyroid (neck swelling)
- Breast (lump, cancer)
- Piles (Haemorrhoids), Fistula in ano and Fissure in ano
- Swellings anywhere in the body
- Boils, abscess and infection



General Medicine: With a group of specialist doctors and allied health staff who are dedicated in providing patient-centric medical care, this division is committed to bring healthcare of international standards within the reach of every individual. Shija Hospitals is accredited by the National Board of Examination for 3 years post graduate DNB course in General Medicine. The dedicated team of physicians provide outpatient and inpatient primary care services for adults and consultative services for patients with complex clinical problems. They also provide pre operative evaluation that helps in ensuring an uneventful and successful surgery. Intensive-care under our dedicated physicians is also provided to patients with life threatening conditions like instability (hypertension/ hypotension), airway or respiratory compromise (such as ventilator support), acute renal failure, potentially lethal cardiac arrhythmias, or the cumulative effects of multiple organ failure, more commonly referred to now as multiple organ dysfunction syndrome. Such patients are admitted and closely monitored in intensive care units until deemed stable to transfer to a less intensively monitored unit.

Medical Gastroenterology: Our gastroenterology department offers comprehensive therapy for various gastroenterological conditions. The center has state-of-the-art facilities and a panel of expert doctors, making it the preferred option for the management of gastroenterology disorders. It specializes in the diagnosis, treatment, and prevention of disorders of esophagus, stomach, small intestine, colon and rectum, pancreas, gallbladder, bile ducts and liver. We provide comprehensive care for gastro-intestinal conditions such as heartburn, nausea, difficulty in swallowing, abdominal pain/bloatedness, incomplete bowel evacuation, constipation, diarrhoea, Irritable Bowel Syndrome (IBS), blood in stool, jaundice,



piles & other anal disorders, alcoholic liver disease, viral hepatitis, liver cirrhosis, biliary and pancreatic duct diseases, tumours of the gastrointestinal tract, blood vomiting, removal of ingested foreign body, management of ingested corrosive.

A perfect blend of advanced technology and compassionate staff allows us to achieve positive results and fast recovery. Our gastroenterology department provides various diagnostic, therapeutic, and emergency services like gastroscopy, colonoscopy, ERCP, endoscopic ultrasound (EUS), narrow band imaging (NBI), capsule endoscopy. These procedures help our team of doctors make a precise diagnosis and provide expert care.



Shija Kidney Centre: The Centre of Nephrology at Shija Hospitals is one of the leading kidney centers in the region and has comprehensive renal transplant programs. Kidney transplants at Shija Hospitals offer the most cost-effective packages at a leading hospital in India. Shija offers both compatible and ABO-Incompatible Kidney Transplantation. The centre is proud to have performed the 1st ABO-Incompatible Kidney Transplant in NE India. The Centre performs minimally invasive surgeries for renal donors which minimizes the post-operative recovery time as well as hospitalization. The stringent infection control practices, immunosuppressive protocols and proactive vigil for complications and their prompt management make the service a huge success.

The nephrology department contains state-of-the-art infrastructure and technology to deal with all kinds of kidney diseases, state-of-the-art, advanced dialysis unit with peritoneal dialysis facilities, best technology to perform continuous replacement therapy in critically ill patients, kidney biopsy facilities, management of critical care nephrology, 24-hour emergency services, state-of-the-art imaging and laboratory medicine.



Neurosurgery: The centre of Excellence of Neurosurgery, Shija Hospitals is equipped with facilities at par with the best in the region to cover the entire range of Neurosurgical diseases. A branch of surgery involved with the brain, spine and nerves, is a key specialty at Shija Hospitals. With technology becoming the prime driver in most areas of healthcare, tremendous strides have been made in Neuro care. We have state of the ART operating theatres with specially trained nursing staff and a dedicated neurosurgical intensive care unit. Shija Hospitals is recognized as a leader in acute Neurosurgical care and is ranked among the top hospitals specializing in Neuro care in the region. Ably supported by modern Neuro-radiology service, Neuro-intensive care facility, multispecialty referral facilities under one roof, makes this centre achieve outcomes matching those of the leading institutions across the region. Shija is proud to be recognized as a referral centre for neurosurgical treatment by the Govt. of Manipur. The first surgical cerebral aneurysm clipping in Manipur was successfully performed by a team of doctors led by Dr. Ch. Gautam, Consultant Neurosurgeon, Shija Hospitals in the year 2013. SONOPET Ultrasonic Aspirator was installed for the 1st time in Manipur by Shija for clear, safer, bloodless & faster brain tumour surgery. Routinely performed surgeries include - Surgical and ICU management of all types of Head & Spinal Injuries, Brain Tumor Surgery, Vascular Neurosurgery (Aneurysmal Surgery, Arteriovenous Malformations, Carotid endarterectomy), Skull Base Surgery (Surgical excision of skull base tumors, Cranio facial resection), Minimal invasive Surgery (Cervical Disc surgery- anterior and posterior, Cervical disc replacement, Spinal Stabilisation and instrumentation, spinal cord tumors and infections), Surgery for removal of intraventricular tumors, Intracranial haematoma, evacuation, surgery for Obstructive hydrocephalus etc.

Obstetrics & Gynaecology: Shija Hospitals is committed to providing world-class health care for women seeking gynecology solutions. Our team of experts ensures expectant women and couples seeking fertility solutions to couples struggling to achieve pregnancy experience superior health care benefits and services. We provide excellent healthcare services for expectant mothers in need of special care during and post pregnancy.



Services offered:

- Adolescent health care
- Reproductive endocrine care
- Menstrual disorders management
- Benign breast disorders management
- Infertility treatments
- Menopause disorders management
- Advanced pelvic endoscopy surgery
- Gynecologic oncology
- Urogynaecology
- Menopause Contraception & Family Planning
- Obstetrics care
- Management of High-risk pregnancy
- Management of medical disorders in pregnancy
- Painless Normal Delivery
- The department is headed by our eminent specialist



Ophthalmology: Mentored by LAICO (Lion's Aravind Institute of Community Ophthalmology) and Aravind Eye Care Systems, Madurai, Shija Eye Care Foundation has successfully re-engineered its processes and systems to make the services inclusive for all. Our ophthalmologists are surgical and medical specialists and perform eye operations for a variety of eye related issues. Our highly qualified ophthalmology team have experience in all aspects of eye care and eye health.

Shija Eye Care Foundation is the first centre in the state to have performed corneal transplant and is recognized as a referral centre for the same by the Govt. of Manipur.

Services we provide

- Testing and treatment for glaucoma and cataracts
- Management of medical problems (i.e., pink-eye and watery-eye)
- Eye surgeries for ptosis, squint,
- Vitreoretinal Specialist (for conditions that affect the retina and vitreous)
- Cornea Specialist
- Paediatric ophthalmology
- Oculoplasty and ocular oncology

Dermatology: Dermatology Department at Shija Hospitals offers all the modern services and treatment procedures to treat different kinds of skin and hair disorders. Skin disorders range from simple issues such as eczema and warts to something as serious as psoriasis and even skin cancer. We offer a complete range of services for patients with skin disorders including acne, eczema, dermatitis, psoriasis, hair loss, warts, pigmentation and therapy of cosmetic and ageing conditions of the skin, fat, nails and hair. We have excellent histological facilities to help in diagnosing difficult and atypical skin problems. Being part of multi specialty hospital, interlink with other departments is always available for multi disciplinary approach.

We perform various cosmetic and dermatosurgical procedures backed by great team of highly skilled Cosmetic surgeons. At Shija Hospital's Dermatology Centre, we offer unmatched clinical excellence and best-in-class hospitality. We have a sound team of dermatologists with years of experience in providing treatment for skin problems. Cutting-edge technology and infrastructure further complement our team's skill in providing world-class dermatology services.

Respiratory Medicine: The department of Respiratory Medicine (Pulmonary Medicine or Chest Medicine or Respiratory Medicine) deals with diseases related to the respiratory tract. Shija Hospitals is considered as the best hospital for Respiratory medicine with team of eminent chest specialists dealing with critical, complex and rare conditions. The department uses the latest technology to provide effective care in an out-patient or in-patient setting which also includes intensive care. We have the latest state-of-the-art facilities for Imaging diagnostics, a Bronchoscopy unit, Pulmonary Function Lab (PFT Lab) spearheaded by highly experienced and qualified doctors. With a strong commitment to innovation and research, Shija Hospitals brings to its patients, access to advanced treatment options. The department of Respiratory Medicine caters to various respiratory diseases like: Pneumonia, Tuberculosis, Bronchial Asthma, Chronic Obstructive Pulmonary Disease (COPD), Acute Respiratory Distress Syndrome (ARDS), Pulmonary Hypertension (PH), Sleep Disorders, Pulmonary Fibrosis, Lung Cancer, Interstitial Lung Diseases etc.



Orthopaedics: Expert and highly experienced specialists at the Department of Orthopaedics at Shija Hospitals diagnose, treat, rehabilitate and prevent disorders of the entire musculoskeletal system. Our Orthopaedics and spine department encompasses the latest high-definition arthroscopic systems, state-of-the-art joint replacements with exceptionally compassionate care.

We provide services for Joint replacements, Arthroscopy and sports injuries, Paediatric orthopaedics, Spine surgery, Physiotherapy and rehabilitation. Shija is the first private hospital in Manipur to introduce Arthroscopy and it is also the first private hospital in Manipur to perform joint replacement surgeries by its own orthopaedic surgeons. Specialty highlights of this department include highly qualified and experienced surgeons with cumulative experience, team of skilled anaesthetists and para-medical staffs, dedicated ultra-modern modular OT, high definition arthroscopic systems, well-equipped Surgical ICUs for post-operative care, comprehensive radiology unit including CT scan, Digital X-Ray, etc.



Dietetics & Nutrition: Ensures that food served in the hospital is safe and healthy. It educates people who need special diets as part of their medical treatment.



Otorhinolaryngology (ENT): The Department of ENT provides a broad spectrum of surgical as well as medical services for the disorders related to ear, nose, throat, head and neck. The highly skilled team of ENT specialists uses the latest equipments and technologies to perform skull base surgeries, endoscopic nasal surgeries, ear and cochlear implants. The team is expert in treating patients in different age groups and with problems related to ear, nose and throat, some of which include the following:

- Hearing and deafness, deviated septum, rhinitis, ringing in the ears, sinusitis, nasal obstruction, sinus headaches and migraines, and various cancerous conditions.
- Sleep-related disorders such as nasal and airway obstruction, sleep-disordered breathing, sleep apnea and snoring along with expert counseling and consultations to the patient.
- Problems related to the throat including sore throat, throat tumors, gastroesophageal reflux disease (GERD), hoarseness, infections, vocal cord and airway disorders.
- Defects at the time of birth, related to the head and neck, ear infection, developmental delays, airway problems, tonsil and adenoid infection, asthma and allergy.

The doctors are highly efficient and also work in collaboration with other specialties to deal with the congenital disorders and facial deformities which may occur during childbirth such as cleft palate and lip along with speech pathologies. The collaboration with other specialties ensures that the patient is offered complete quality care.



Paediatrics & Neonatology : Right from the time your child is born, till the age of 18, your child may require specialized care. Dept. of Neonatology & Paediatrics comprises of a team of highly specialized medical professionals who are experienced in taking care of chronic disease management, acute illnesses, injury, mental or behavioural disorders and rehabilitation, offering your child a wide range of outpatient services. To prevent your child from diseases, viruses and bacteria the centre also provides vaccination facilities.

Our skilled team of healthcare professionals is well experienced in caring for children suffering from acute and critical illness or injury. Equipped with advanced technology, the neonatal intensive care unit (NICU) and paediatric intensive care unit (PICU) at Shija Hospitals is well designed not only to improve the chances of survival but also speed up the recovery process.

Urology: The Department of Urology at Shija Hospitals delivers advanced and specialized urological care at par with international standards. The department provides a full spectrum of diagnostics and treatment for urology cancers, urinary tract infectious diseases, renal disease, reconstructive urology surgery, laparoscopic urology, erectile dysfunction, stone disease, paediatric urology, prostate diseases, renal transplant and andrology. The urologists are experts in treating patients with the latest and updated laparoscopic and laser technologies. The department delivers multi-disciplinary and compassionate care to the patients suffering from any kind of urologic disorders.



The team of urologists is highly specialized in treating patients of all ages and gender with utmost and personalized care. The Department demonstrates the best example of human skill and technology as it operates with innovative technologies by performing minimally invasive procedures which in turn bring out the best results in the patient recovery.

The Department offers expert consultation, counselling and education to the patients and their family members in order to make them understand the problem, especially in cases of transplants. The department has credits of performing Laparoscopic Nephrectomy for the first time in Manipur in the year 2006. First Laparoscopic Pyeloplasty for PUJO in Manipur was also performed in the department in 2015. Retrograde Intra Renal Surgery (RIRS) was also introduced for the first time in Manipur (2012) with the installation of Holmium LASER and flexible uretero renoscope (Carl Zeiss, Germany).

Smile Train Shija Cleft Project

Rendering new smiles, new hopes, new lives ...



Shija Hospitals is recognized as a partner hospital by Smile Train Inc, USA. The Smile Train, an NGO with its headquarter based in New York, USA was launched in 1998 with the goal to eradicate the global problem of cleft lips and palates by providing free corrective surgery. Research reveals that 1 in every 600 to 800 live births is born either with cleft lip or palate in India. Over 35000 children are born with these congenital deformities every year. Millions of children are suffering with unrepaired clefts and they cannot eat or speak properly. They cannot attend school, socialise with other children in the surrounding or hold a job.

Smile Train Shija Cleft Project was launched on 11th of June 2006. We have successfully performed more than 4000 free cleft surgeries since the beginning. We have been working on ensuring that the benefit of the project reaches to the masses of the North Eastern India and even to the extent of the neighboring country of Myanmar.



In its endeavor towards developing a good rapport with the neighboring country of Myanmar, SHRI started the venture of Mission Myanmar in May 2013. So far, three successful missions were ventured wherein 134 cleft lip and palate, 179 cataract blindness and 32 key-hole surgeries were performed for free at Monywa General Hospital, Myanmar.

SHRI in collaboration with AMASI (Association of Minimal Access Surgeons of India), took up the initiative of providing free training to two surgeons and six nurses from Monywa General Hospital, Myanmar for two months in the areas of Laparoscopic surgery, Operation Theatre Technology and Critical Care under Shija Overseas Training Program.

TOWARDS MAKING MANIPUR AS ONE OF THE MEDICAL TOURISM DESTINATIONS

With India's Look East/ Act East Policy, Manipur's favourable location bordering with Myanmar, surface and air connectivity with ASEAN nations, meeting point of two superpower nations -China and India, huge tourism potentials of the state especially in war (Battle of Imphal-Biggest in 2nd World War), ecology, sports and cultural arenas, two medical colleges, many nursing colleges and paramedical institutions, cost effective treatment by accredited healthcare providers that are at par with international standards- Shija strongly believes that Manipur, one day, will become one of the medical tourism destinations.

"Future belongs to those who believe in the beauty of their dreams".
Dr. Kh. Palin, Chairman cum Managing Director.

FIRST BATCH MBBS STUDENTS TAKING OATH



LECTURE GALLERY



Extra Curricular Activities



KNOW YOUR FACULTY

Sl. No.	Department	Sl. No.	Designation	Name
1	ANATOMY	1	Professor & HOD	Dr. Moirangthem Matum Singh
2		2	Professor	Dr. Thounaojam Naranbabu Singh
3		3	Associate Professor	Dr. Khrieketouzo Chielie
4		4	Associate Professor	Dr. Haobam Rajajee Singh
5		5	Assistant Professor	Dr. Mrinalini Konjengbam
6		6	Assistant Professor	Dr. Thoudam Bedita Devi
7		7	Assistant Professor	Dr. Leon Ranjoline Guria
8		8	Assistant Professor	Dr. Angom Manitombi Devi
9		9	Tutor	Dr. Chingangbam Jameskrishan Singh
10		10	Tutor	Dr. Pangambam Bohnson Singh
11		11	Tutor	Dr. Chingangbam Roni Leima
12		12	Tutor	Dr. Ahenba Keisham
13		13	Tutor	Dr. Rickel Tonjam
14		14	Tutor	Dr. Khundongbam Majaibema
15	PHYSIOLOGY	1	Professor & HOD	Dr.Moirangthem Anita Devi
16		2	Professor	Dr.Oinam Punyabati Luikham
17		3	Professor	Dr. Wangkheimayum Kanan
18		4	Associate Professor	Dr. Susie Keithellakpam
19		5	Assistant Professor	Dr.Thangjam Pricila Devi
20		6	Assistant Professor	Dr. Princy Devi Okram
21		7	Assistant Professor	Dr. Yendrembam Gyani
22		8	Senior Resident	Dr. Chingangbam Sharmila Devi
23		9	Tutor	Dr. Tomthin Konthoujam
24		10	Tutor	Dr.Khaidem Samrath Singh
25		11	Tutor	Dr. Molly Tongbram
26		12	Tutor	Dr. Athokpam Punin Luwang
27	BIOCHEMISTRY	1	Professor & Director	Dr. Maisnam Amuba Singh
28		2	Associate Professor	Dr. Takhelmayum Paras Singh
29		3	Asst. Prof. & HOD-in-Charge	Dr. Oinam Prabita Devi
30		4	Assistant Professor	Dr. Wahengbam Diana Devi
31		5	Assistant Professor	Dr. Moirangthem Marcony Meetei
32		6	Senior Resident	Dr. Soumyadip Sarma
33		7	Senior Resident	Dr. Phurailatpam Uma Devi
34		8	Senior Resident	Dr. Donald Tokpam
35		9	Senior Resident	Dr. Ursula Khwairakpam
36		10	Demonstrator	Mrs. Salam Ghanapriya
37	PHARMACOLOGY	1	Professor & HOD	Dr. Akham Subhalakshmi Devi
38		2	Assistant Professor	Dr. Laishram Elizabeth Devi
39		3	Assistant Professor	Dr. Laitonjam Jonita Devi
40		4	Assistant Professor	Dr. Neerajkumar Sharma Manohar
41		5	Senior Resident	Dr. Moirangthem Premi Devi
42		6	Tutor	Dr. Wahengbam Venkataraman Meitei
43		7	Tutor	Dr. Anil Thaodem

44		8	Tutor	Dr. Rajkumar Tarusana
45		9	Tutor	Dr. William Yaiphaba Wahengbam
46		10	Tutor	Dr. Laikangbam Bonny
47		11	Tutor	Dr. Dimpi Yumlembam
48	PATHOLOGY	1	Professor & HOD	Dr. Sanjay Nath
49		2	Professor	Dr. Kaushik Debnath
50		3	Assistant Professor	Dr. Wangol Kiyam
51		4	Assistant Professor	Dr. Phuritshabam Pinky
52		5	Assistant Professor	Dr. Konsam Vaskarjeet
53		6	Assistant Professor	Dr. Thangjam Shitalmala Devi
54		7	Assistant Professor	Dr. Bijoya Debnath
55		8	Senior Resident	Dr. Nongmaithem Karuna Devi
56		9	Senior Resident	Dr. Hijam Priyanka Devi
57		10	Senior Resident	Dr. Priyadarshini Rajkumari
58		11	Tutor	Dr. Suchmeetra Yumnam
59		12	Tutor	Dr. Valentina Kshetrimayum
60		13	Tutor	Dr. Khaidem Ronaldo Singh
61		14	Tutor	Dr. Manibuson Thiyam
62		15	Tutor	Dr Asem Puja Devi
63	MICROBIOLOGY	1	Professor & HOD	Dr. Khumanthem Sulochana Devi
64		2	Associate Professor	Dr. Thangjam Rubee Chanu
65		3	Assistant Professor	Dr. Yumlembam Bishwabati Devi
66		4	Assistant Professor	Mrs. Sangita Thangjam
67		5	Assistant Professor	Dr.Kabita Devi Waikhom Laishram
68		6	Assistant Professor	Dr. Daniel Ningthoujam
69		7	Demonstrator	Mrs. Uttejna Tewari
70		8	Tutor	Dr. Thingom Varun Singh
71		9	Tutor	Dr. Soram Loyumba
72		10	Tutor	Dr. Bona Chanu Laishram
73		11	Tutor	Dr. Ilona Wahengbam
74	FORENSIC MEDICINE	1	Professor & HOD	Dr. Thoidingjam Bijoy Singh
75		2	Associate Professor	Dr. Pabitrimala Nandeibam
76		3	Assistant Professor	Dr. Rajkumari Reena Devi
77		4	Assistant Professor	Dr.Ringnahring T.
78		5	Senior Resident	Dr. Soibam Neha
79		6	Tutor	Dr. Kongbrailatpam Robert Sharma
80		7	Tutor	Dr. Senorita Pukhrambam
81		8	Tutor	Dr. Langpoklakpam Bamkim Singh
82	COMMUNITY MEDICINE		Tutor	Dr. Maibam Sushil Singh
83		1	Professor & HOD	Dr. Toijam Gambhir Singh
84		2	Professor	Dr.Thingujam Achouba Singh
85		3	Assistant Professor	Dr. Soram Goutam
86		4	Assistant Professor	Dr. Bemma Konthoujam
87		5	Assistant Professor	Dr. Joshna Rajkumari

88		6	Assistant Professor (Stats)	Dr. Thokchom Amumacha Singh
89		7	Assistant Professor	Dr. Ngamba Akham
90		8	Tutor	Dr.Thounaojam Sarah
91		9	Tutor	Dr. Chingkhram Thokchom
92		10	Tutor	Dr. Madhurchand Singh Khagokpam
93		11	Tutor	Dr. Rajkumar Chandrakumar Singh
94		12	Tutor	Dr. Nongmaithem Malemnganba Singh
95	GENERAL MEDICINE	1	Professor & HOD	Dr. Sorokhaibam Bhagyabati Devi
96		2	Professor	Dr. Robinson Ningshen
97		3	Assistant Professor	Dr. Chakshu
98		4	Assistant Professor	Dr. Javed Malik
99		5	Assistant Professor	Dr. Neha Thangjam
100	DERMATOLOGY	1	Professor & HOD	Dr. Yumnam Lokendra Singh
101		2	Assistant Professor	Dr. Tolongkhomba Potsangbam
102		3	Assistant Professor	Dr. Dilimpou Pamei
103		4	Assistant Professor	Dr. Erika Salam
104		5	Senior Resident	Dr. Anupama Devi Wahengbam
105	PSYCHIATRY	1	Professor & HOD	Dr. Ningombam Heramani Singh
106		2	Assistant professor	Dr. Seram Chaoba Devi
107		3	Senior Resident	Dr. Meesha Haorongbam
108	PAEDIATRICS	1	Assistant Professor	Dr. Brahmacharimayum Sarita Devi
109		2	Assistant Professor	Dr. Khangembam Sachikumar
110		3	Assistant Professor	Dr. Moirangthem Meenakshi Devi
111		4	Assistant Professor	Dr. Sareet Kumari Nandeibam
112	GENERAL SURGERY	1	Professor & HOD	Dr. Thounaojam Sudhir Chandra Singh
113		2	Professor	Dr. Sougrakpam Robindro Singh
114		3	Associate Professor	Dr. Sorokhaibam Jugindra Singh
115		4	Assistant Professor	Dr. Khwairakpam Devendra Singh
116		7	Assistant Professor	Dr. Sinkhol Laishram
117		5	Assistant Professor	Dr. Chandragupta Chongtham
118		6	Assistant Professor	Dr. Ajit Lukram
119		8	Assistant Professor	Dr. Thokchom Amataleima
120		9	Assistant Professor	Dr. Nimi Thingujam
121		10	Senior Resident	Dr. Firdaus Fatima
122	ORTHOPAEDIC	1	Professor & HOD	Dr. Oinam Guneshwar Singh
123		2	Assistant Professor	Dr. Phuritshabam Iboyaima Singh
124		3	Senior Resident	Dr. Robium Naorem
125		4	Senior Resident	Dr. Kanchana Laishram
126	RESPIRATORY MEDICINE	1	Assistant Professor	Dr. Yumnam Bidyalakshmee Devi
127	PMR	1	Assistant Professor	Dr. Longjam Darendrajit Singh
128	OPHTHALMOLOGY	1	Assistant Professor	Dr. Noornika Khuraijam
129		2	Assistant Professor	Dr. Sachindra Laishram
130		3	Assistant Professor	Dr. Chongtham Sarda Devi

131		4	Assistant Professor	Dr. Dinakumar Yambem
132	ENT	1	Assistant Professor	Dr. Moirangthem Niteshore Singh
133		2	Assistant Professor	Dr. Taorem Medhabati Devi
134		3	Assistant Professor	Dr. Yumnam Anupama Devi
135		5	Senior Resident	Dr. Sonee Thingujam
136		6	Senior Resident	Dr. RK Karnika
137	Obst & Gynae	1	Associate Professor & HOD	Dr. Yendrembam Gunabati Devi
138		1	Associate Professor	Dr. Ningthoukhongjam Subodha Singh
139		2	Associate Professor	Dr. Nandeibam Yohen
140		3	Assistant Professor	Dr. Phijam Dhaneshwor Singh
141		4	Assistant Professor	Dr. Lairenjam Dipenty Devi
142		5	Assistant Professor	Dr. Gyaneshwori Laishram
143		6	Assistant Professor	Dr. Irom Amrita
144	ANAESTHESIOLOGY	1	Associate Professor	Dr. Khoinam Dhananjoy Singh
145		2	Assistant Professor	Dr. Kajal Momin
146		3	Assistant Professor	Dr. Tongbram Yashobanta Singh
147		4	Assistant Professor	Dr. Thounaojam Dinesh Singh
148		5	Assistant Professor	Dr. Kennedy Tayenjam
149		6	Assistant Professor	Dr. Sulochana Darjee
150		7	Assistant Professor	Dr. Ananda Ngangom
151	RADIO DIAGNOSIS	1	Associate Professor	Dr. Khumanthem Shailendra Singh
152		2	Associate Professor	Dr. Thangjam Gautam Singh
153		3	Assistant Professor	Dr. Dimpu Gangmei
154	DENTISTRY	1	Assistant Professor	Dr. Ningombam Gitson Meitei
155		2	Senior Resident	Dr. Thokchom Vandana

Shija Group of Organisations



Shija Hospitals

Shija Academy of Health Sciences

First Homegrown Private Medical College in North East India

Shija Urban OPD

Keishampat

Shija Common Bio-Medical Waste Management

Lamdeng



Shija Foundation

Smile Train Shija Cleft Project

Shija Blood Bank & Transfusion Services

Shija Eye Care Foundation

Shija Regional Oxygen Plant & Generation Unit

Shija Academy (Nursing & Paramedical)

St. Anthony's School

Vitamin Angels